



ODTUG University: Introduction to Oracle Forms

John Jeunnette

Prairie Systems Group, Limited

Denver, Colorado

johnjeunnette@PrairieSystemsGroup.com

Agenda

Introduction to Forms

- Forms Runtime Environment
- Forms Programming
 - Form Components
 - Wizards
 - Debugger

Questions/Comments/References

Forms Runtime Environment

Client/server vs Webforms vs Webserver Applications

- Client: A personal computer
- Server: A computer hosting the RDBMS (Windows, Unix, VMS)
- “Middle Tier”: A computer running the Forms Server and a web server (Apache or IIS).
- Web Server: Oracle HTTP Server (Apache)
- Web Server Form: Dynamic HTML generated by a PL/SQL package (HTML DB)
- Webform: Oracle Developer Form operating in a browser (native JVM or Jinitiator)
- JVM: Java Virtual Machine

Forms Runtime Environment

Selection Criteria (personal opinion)

- Client/Server or Webforms: controlled environment, rich feature set, “traditional application” (small user population, high-volume usage). (Forms 9i does not support Client/Server deployment.)
- Web Server Forms: uncontrolled or public access, query only, large user population, integration with other web-based applications (large, occasional user population).

Forms Runtime Environment

Form Processing

- Insert/update mode
- Enter Query mode

Form Navigation

- Function Keys
- Menus
- Toolbars

Forms Programming

Components

- Form
- Blocks
- Items
- Canvases
- Windows
- Attached Libraries
- Relations
- Non-Base table blocks

Forms Programming

Components, continued

- More Triggers
- Visual Attributes
- Alerts
- Record Groups
- List of Values (LOV)

Forms Collaborative Development

 Reference Forms

 Object Libraries

 Program Units and PL/SQL Libraries

 Templates

 Standards

 Designer

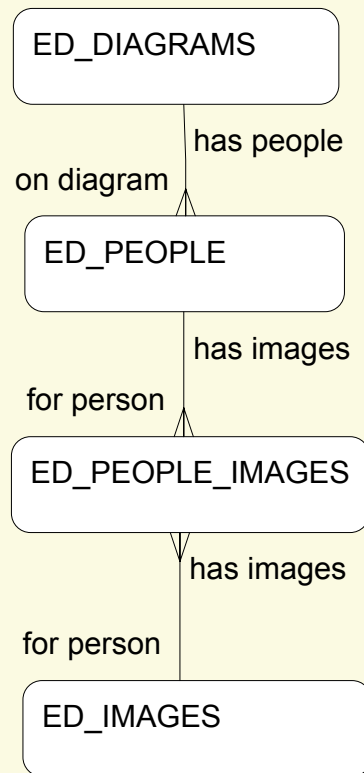
References

- ☞ Oracle Developer Advanced Forms and Reports, by Peter Koletzke and Paul Dorsey, Oracle Press
- ☞ Oracle Forms Developer Form Builder Reference, Available on Metalink: Top Tech Docs->Internet Developer Tools->Oracle Forms->Documentation->Form Builder Reference
- ☞ Oracle Forms Developer and Oracle Reports Developer Guidelines for Building Applications Available on Metalink: Top Tech Docs->Internet Developer Tools->Oracle Forms->Documentation->Guidelines for Building Applications

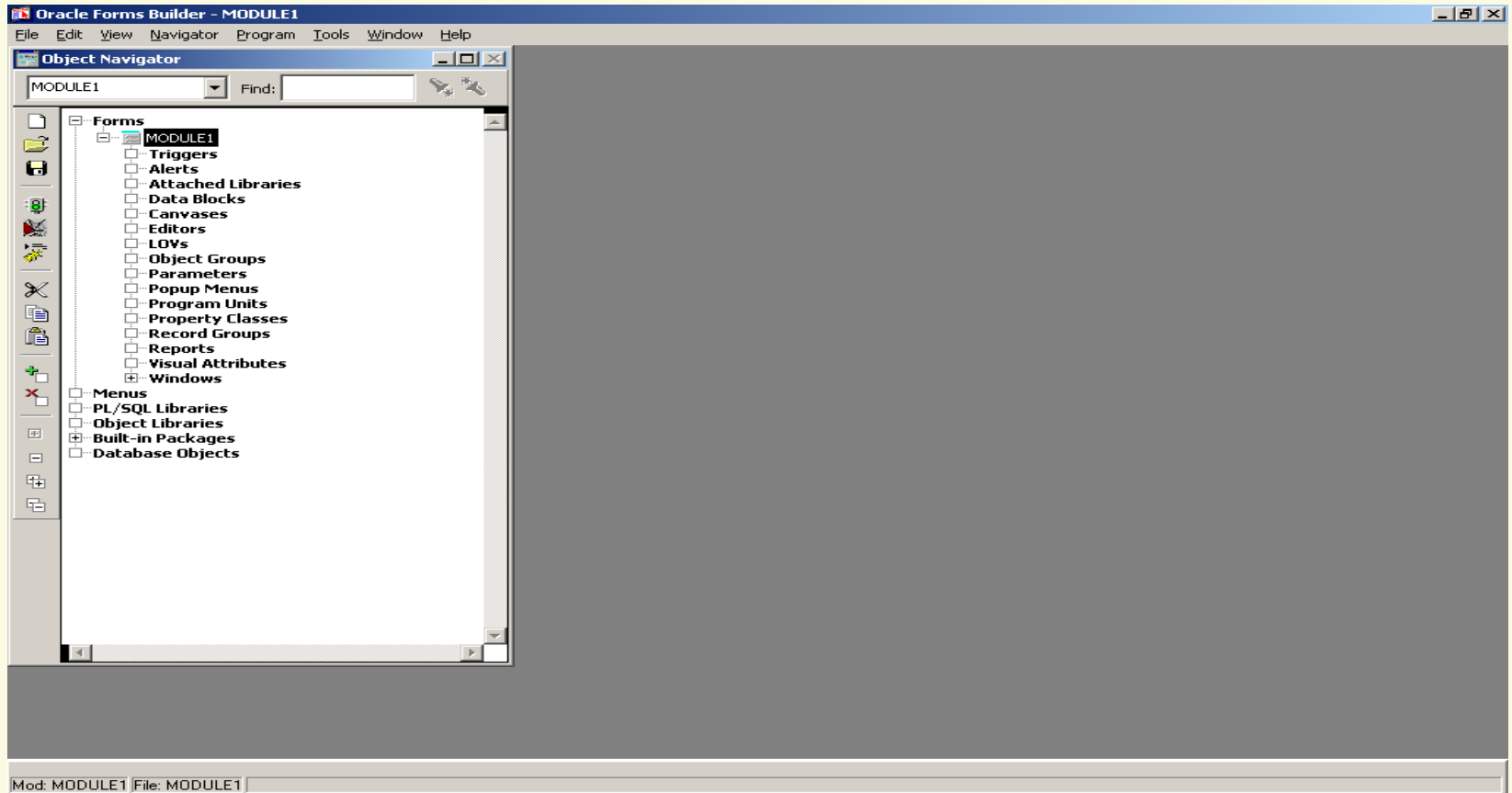
References

- 📄 Oracle Reports Developer Release 6i Reference Manual, Available on Metalink: Top Tech Docs->Internet Developer Tools->Oracle Reports->Documentation->Oracle Reports Developer Release 6i Reference Manual
- 📄 Oracle Reports Developer Release 6i Building Reports, Available on Metalink: Top Tech Docs->Internet Developer Tools->Oracle Reports->Documentation->Oracle Reports Developer Release 6i Building Reports
- 📄 Oracle Reports Developer Release 6i Publishing Reports. Available on Metalink: Top Tech Docs->Internet Developer Tools->Oracle Reports->Documentation->Oracle Reports Developer Release 6i Publishing Reports

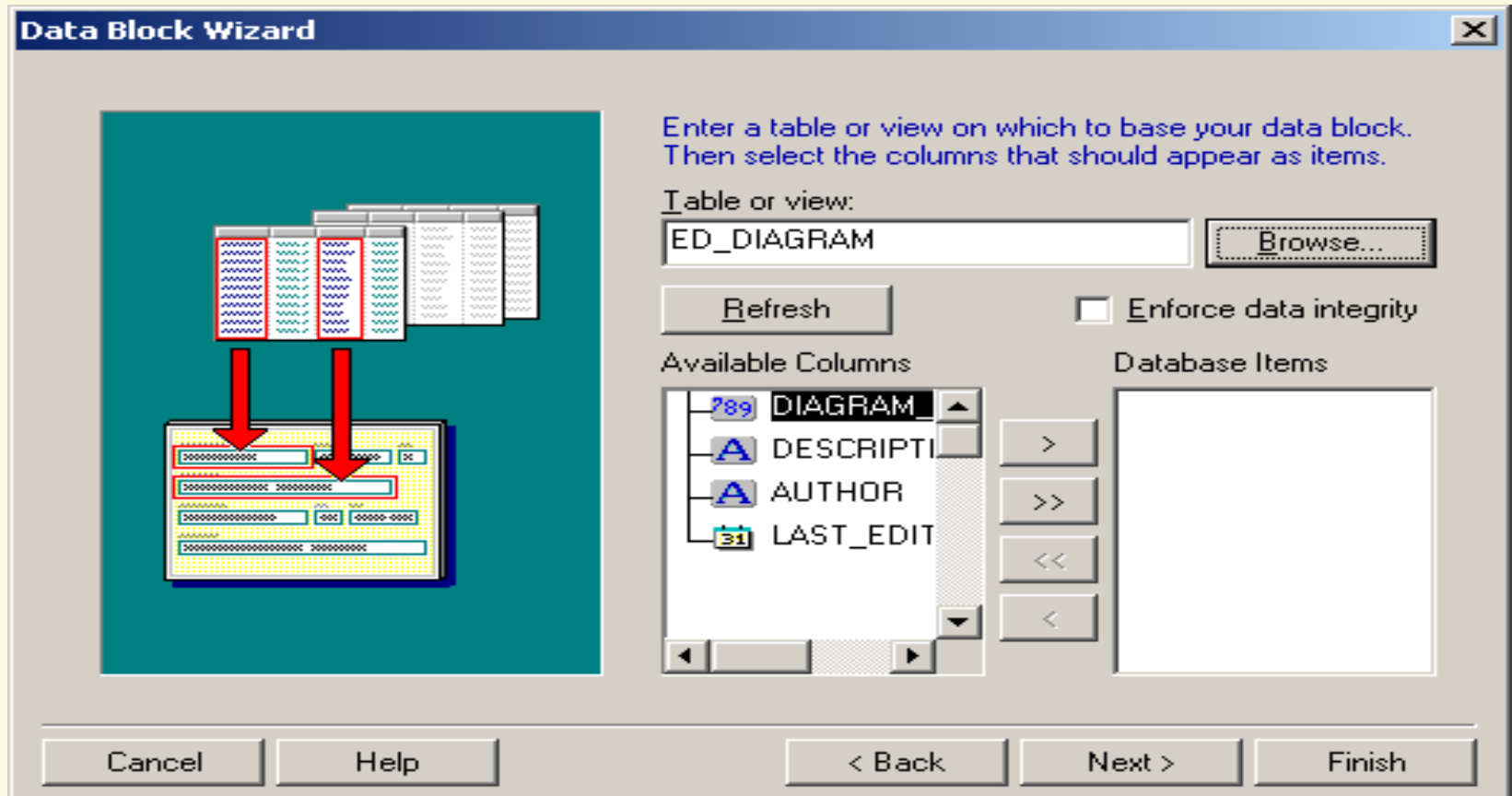
Demo Data Model



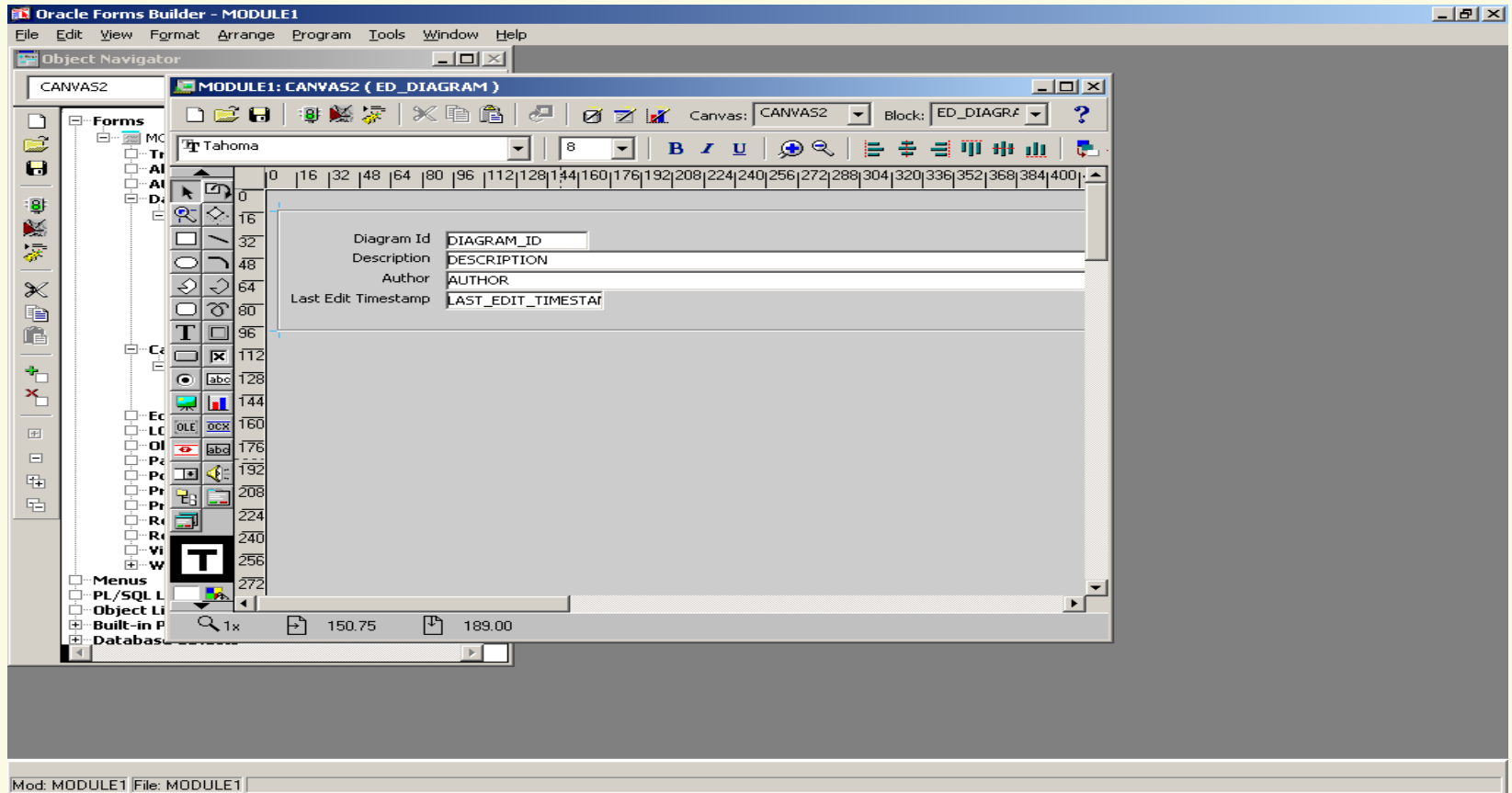
Form Components - Navigator



Block Wizard



Block/Canvas



Detail Block

The screenshot displays the Oracle Forms Builder interface for a module named 'MODULE1'. The main canvas, titled 'MODULE1: CANVAS2 (ED_DIAGRAM)', shows a detail block for the 'ED_PEOPLE' block. The block contains a table with columns for 'Diagram Id', 'Person Id', 'Surname', and 'Given Name'. The table has five data rows. Above the table, there are four text fields: 'Diagram Id' (containing 'DIAGRAM_ID'), 'Description' (containing 'DESCRIPTION'), 'Author' (containing 'AUTHOR'), and 'Last Edit Timestamp' (containing 'LAST_EDIT_TIMESTAMP'). The interface includes a menu bar (File, Edit, View, Format, Arrange, Program, Tools, Window, Help), an Object Navigator on the left, and a status bar at the bottom showing 'Mod: MODULE1 File: MODULE1'.


Diagram Id	Person Id	Surname	Given Name
DIAGRAM_ID	PERSON_ID	SURNAME	GIVEN_NAME
DIAGRAM_ID	PERSON_ID	SURNAME	GIVEN_NAME
DIAGRAM_ID	PERSON_ID	SURNAME	GIVEN_NAME
DIAGRAM_ID	PERSON_ID	SURNAME	GIVEN_NAME
DIAGRAM_ID	PERSON_ID	SURNAME	GIVEN_NAME

Contact

 John Jeunnette

 Principal Consultant

 Prairie Systems Group, Limited

 Denver, Colorado

 JohnJeunnette@PrairieSystemsGroup.com