

SQL What?

What do you mean I
have to work with SQL
Server?

Chris Grabowy
DBA

Speaker Qualifications

- Chris Grabowy has been working in the IT field for over 19 years.
- Chris Grabowy has been a DBA for over 17 years, nine years with Oracle.
- Chris Grabowy has been working heavily with SQL Server for the past year.

Session Objectives

What will be learned in this session?

- The audience will learn some quick, basic SQL Server administration. Each of these tasks will be demonstrated live during the presentation.
- The audience will walk away with a simple, quick reference guide (handout).

Quick Survey

- DBAs? Developers?
- Oracle?
- SQL Server?

“Table of Contents”

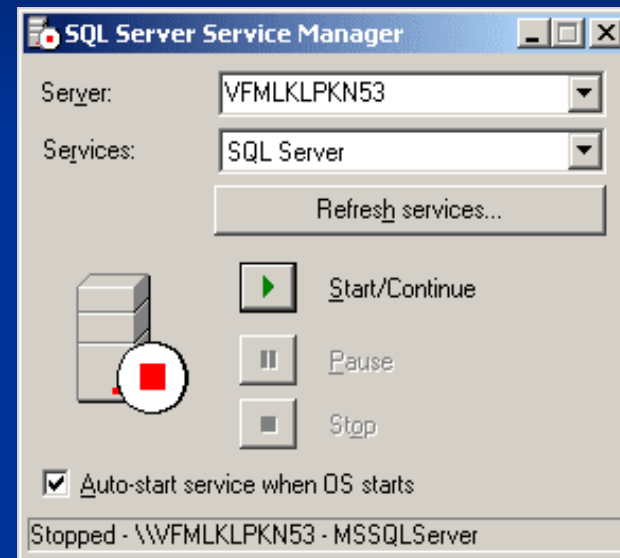
- Starting/stopping SQL Server
- Enterprise Manager
- Query Analyzer
- Online Resources
- Books

Is SQL Server up?

- Obviously, you can simply log into the database.
- Is the MSSQLSERVER service started? Check the Services MMC.
- Can you find the sqlservr.exe process on the Processes tab in the Windows Task Manager?

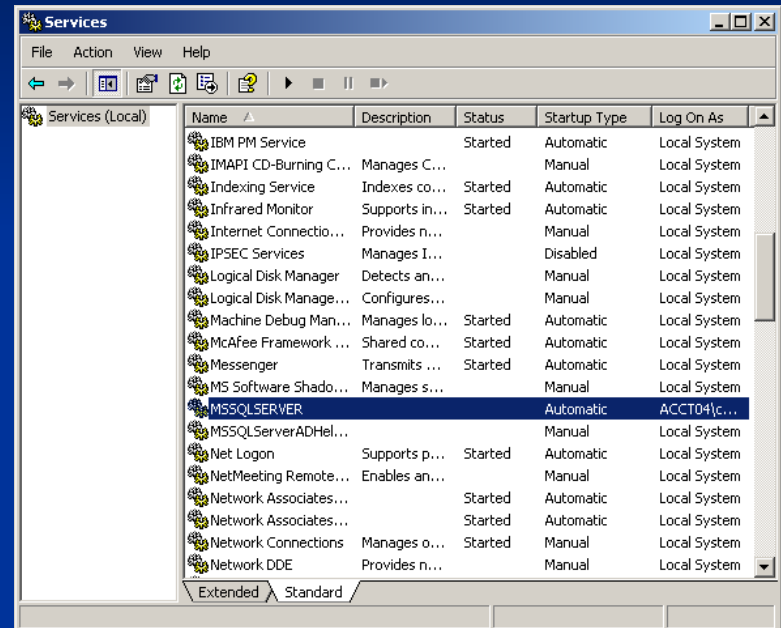
Starting SQL Server from the Service Manager

- From the Start menu – Start -> Programs -> Microsoft SQL Server -> Service Manager. Using the drop downs select the correct server and service and then select the green Start icon
- From the icon tray – Right click on the Service Manager. Select the Start menu option or open the Service Manager.



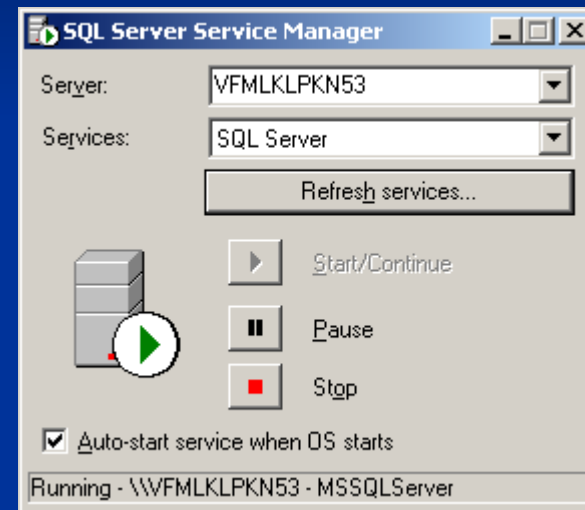
Starting SQL Server from the Services MMC

From the Services MMC – Start -> Programs -> Administrative Tools -> Services. Scroll through the list of services and find the SQL Server service (usually MSSQLSERVER), right click and then select start. Or double click the service and select the Start icon. Or select the service and press the start icon in the icon bar.



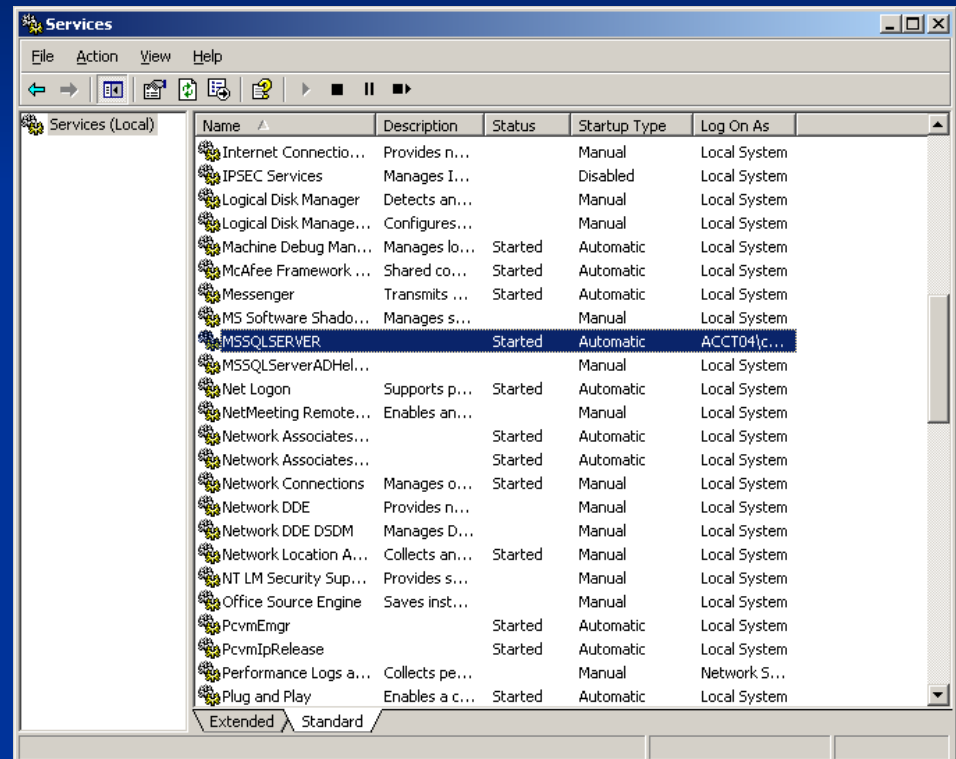
Stopping SQL Server from the Service Manager

- From the Start menu – Start -> Programs -> Microsoft SQL Server -> Service Manager. Using the drop downs select the correct server and service and then select the red Stop icon
- From the icon tray – Right click on the Service Manager. Select the Stop menu option or open the Service Manager.



Stopping SQL Server from the Services MMC

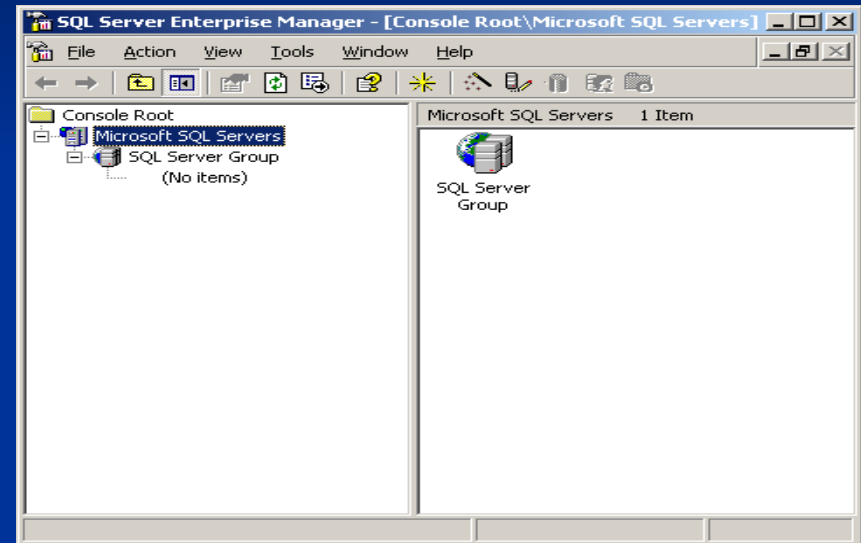
From the Services MMC –
Start -> Programs ->
Administrative Tools ->
Services. Scroll through the
list of services and find the
SQL Server service (usually
MSSQLSERVER), right click
and then select stop. Or
double click the service and
select the Stop icon. Or select
the service and press the stop
icon in the icon bar.



Registering/Logging into SQL Server

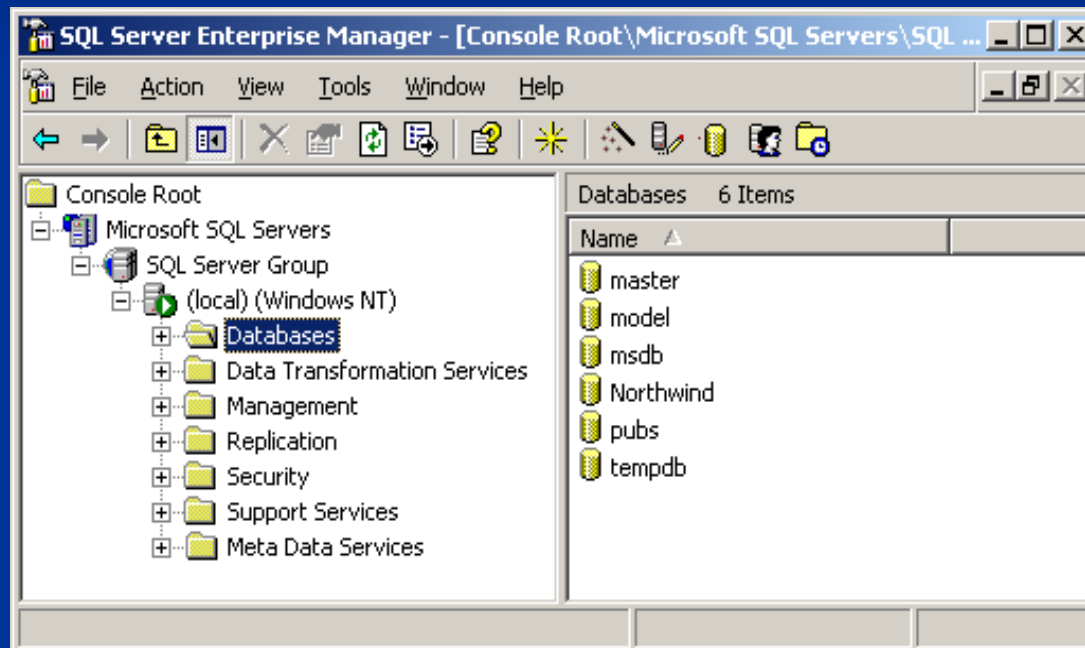
Enterprise Manager needs to be registered with any databases that the DBA or developer wants to access.

- Right click on the SQL Server Group and select New SQL Server Registration. And then answer the prompts by the Register SQL Server Wizard.



Enterprise Manager = Oracle Enterprise Manager

From the Windows Start button: Start -> Programs -> Microsoft SQL Server -> Enterprise Manager.



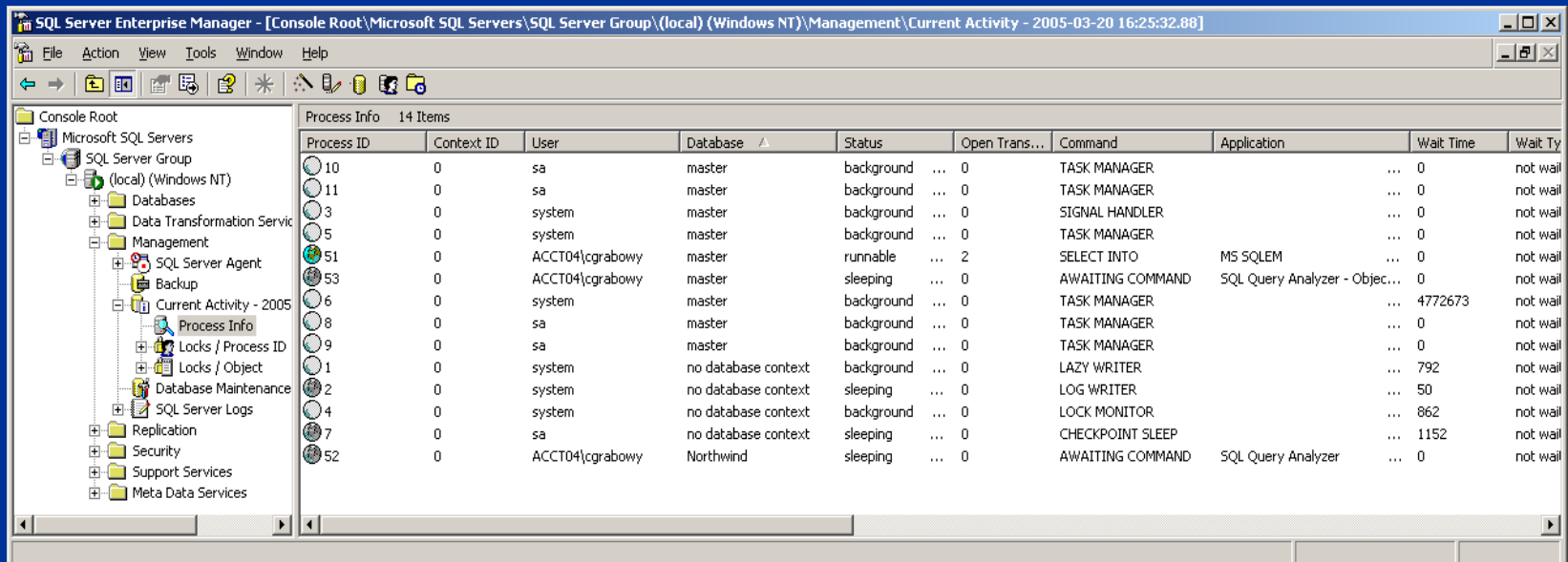
Enterprise Manager

- One of the two tools that a DBA/developer will use to interface with SQL Server.
- Enterprise Manager is the GUI tool to allow a DBA/developer to do any needed administrative tasks with SQL Server.
- Enterprise Manager is the primary tool used by DBAs.

Enterprise Manager

What's going on?

Current Activity in Enterprise Manager: In Enterprise Manager drill down to the desired server -> click on Management folder -> Current Activity icon, and then Process Info icon or Locks icon.



The screenshot shows the SQL Server Enterprise Manager interface. The left pane displays the tree view with 'Current Activity - 2005' expanded to 'Process Info'. The main pane shows a table with 14 items. The table columns are: Process ID, Context ID, User, Database, Status, Open Trans..., Command, Application, Wait Time, and Wait Ty.

Process ID	Context ID	User	Database	Status	Open Trans...	Command	Application	Wait Time	Wait Ty		
10	0	sa	master	background	...	0	TASK MANAGER	...	0	not wait	
11	0	sa	master	background	...	0	TASK MANAGER	...	0	not wait	
3	0	system	master	background	...	0	SIGNAL HANDLER	...	0	not wait	
5	0	system	master	background	...	0	TASK MANAGER	...	0	not wait	
51	0	ACCT04\cgrabowy	master	runnable	...	2	SELECT INTO	MS SQLEM	...	0	not wait
53	0	ACCT04\cgrabowy	master	sleeping	...	0	AWAITING COMMAND	SQL Query Analyzer - Objec...	...	0	not wait
6	0	system	master	background	...	0	TASK MANAGER	...	4772673	not wait	
8	0	sa	master	background	...	0	TASK MANAGER	...	0	not wait	
9	0	sa	master	background	...	0	TASK MANAGER	...	0	not wait	
1	0	system	no database context	background	...	0	LAZY WRITER	...	792	not wait	
2	0	system	no database context	sleeping	...	0	LOG WRITER	...	50	not wait	
4	0	system	no database context	background	...	0	LOCK MONITOR	...	862	not wait	
7	0	sa	no database context	sleeping	...	0	CHECKPOINT SLEEP	...	1152	not wait	
52	0	ACCT04\cgrabowy	Northwind	sleeping	...	0	AWAITING COMMAND	SQL Query Analyzer	...	0	not wait

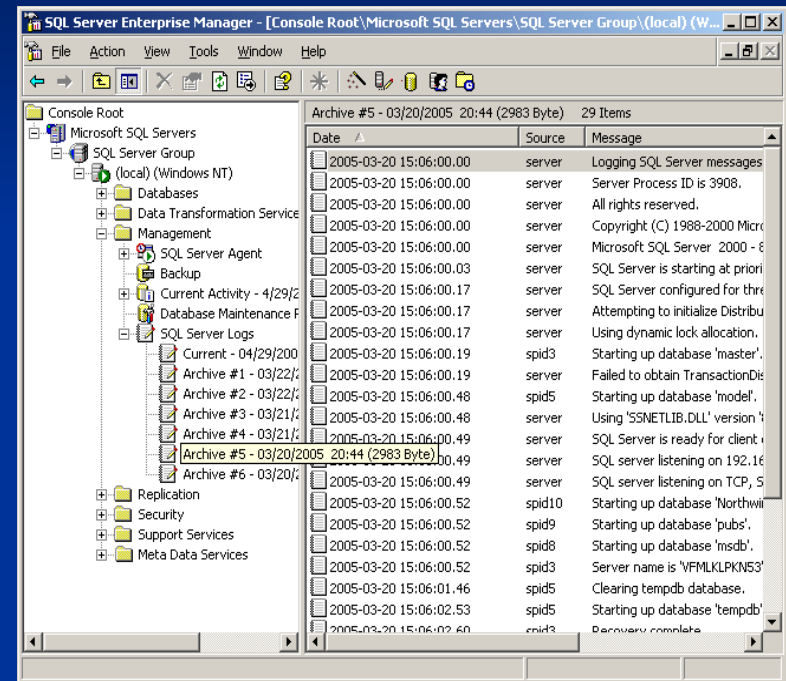
Enterprise Manager

Where's the alert log?

The normal location for the SQL Server Logs:

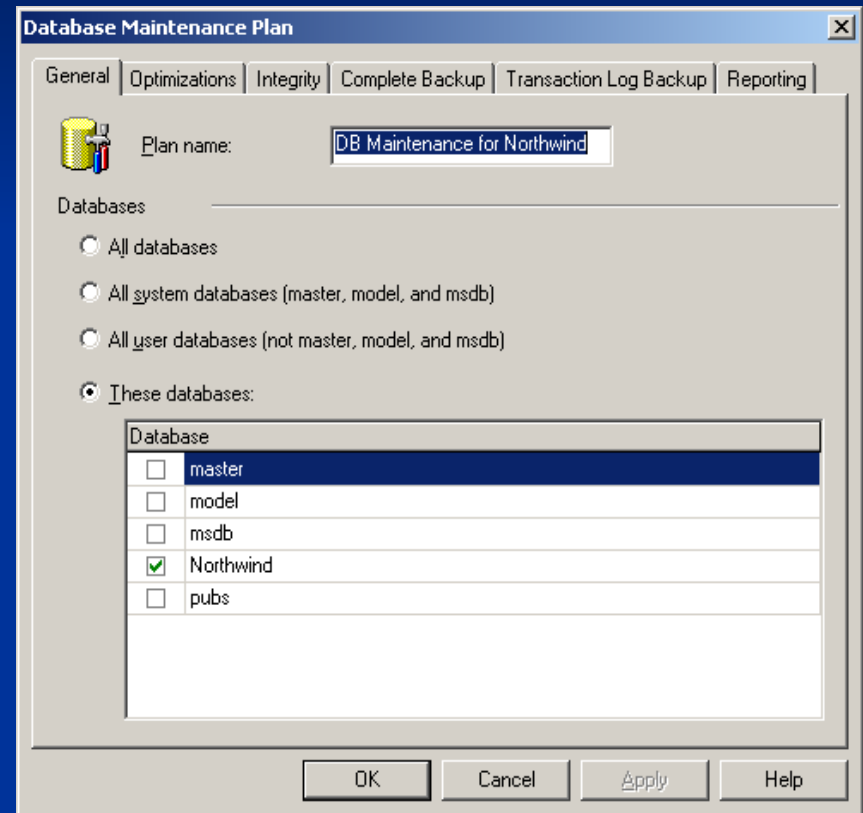
C:\Program Files\Microsoft SQL Server\MSSQL\LOG

In Enterprise Manager drill down to the desired server -> click on Management folder -> click on the SQL Server Logs icon, and then select the desired log.



Enterprise Manager Database Maintenance Plans

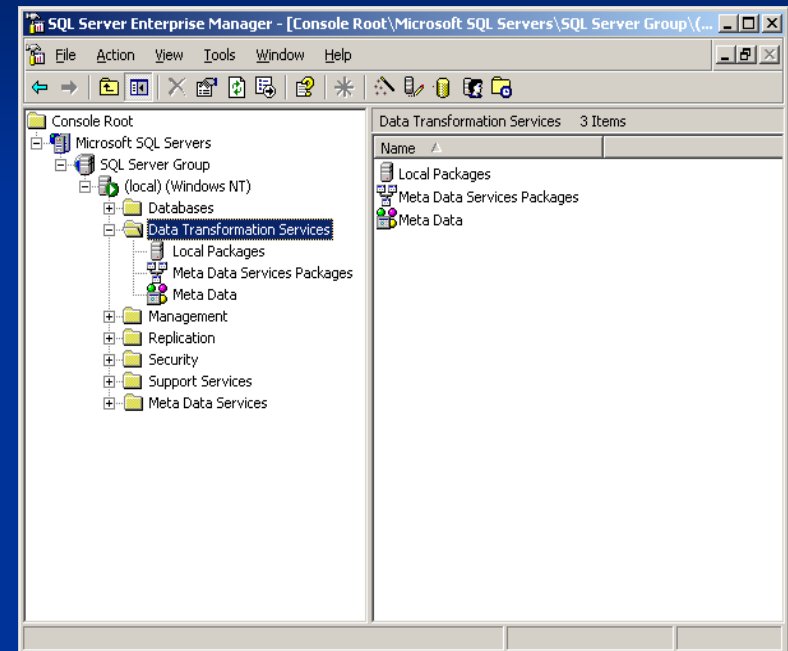
- Database Maintenance Plans can schedule backups, database integrity checks, update statistics, etc.
- So make sure you have at least one of these!!!
- In Enterprise Manager drill down to the desired server -> click on Management folder -> click on the Database Maintenance Plans, right click to create a new maintenance plan.



Enterprise Manager

Data Transformation Services

- DTS (for short) allows you to load and unload data from SQL Server.
- DTS also allows you to perform ETL type processing.
- DTS also allows you to move data from ANY data source to ANY data source.



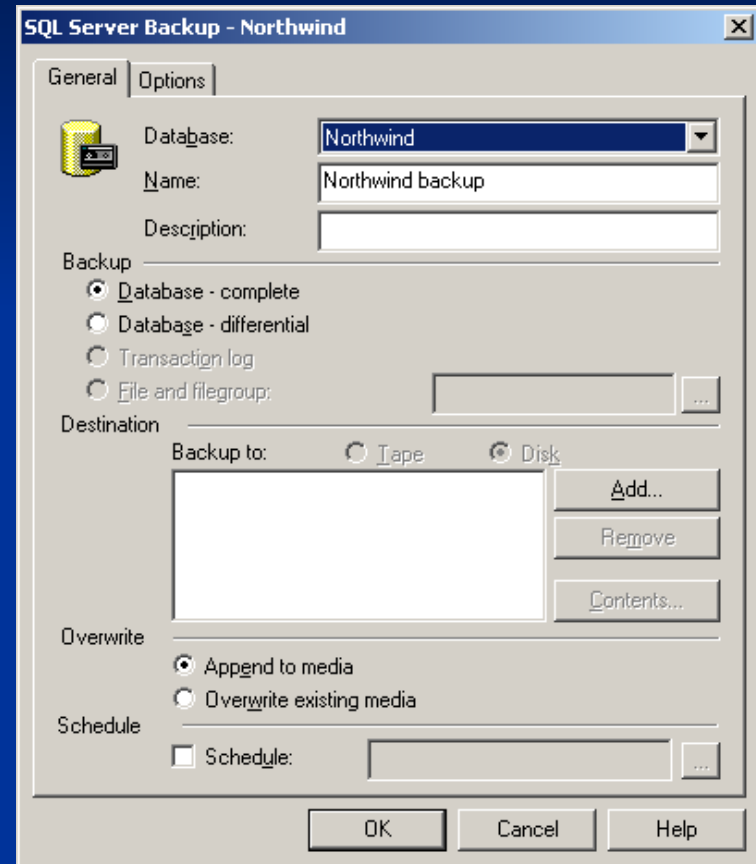
SQL Server Backup

There are several ways to backup a database.

- A Database Maintenance Plan.
- BACKUP DATABASE SQL statement.
- Using Enterprise Manager.

SQL Server Backup

In Enterprise Manager drill down to the desired server -> double click on the Databases folder -> right click on the database -> select All Tasks from the drop down menu -> select Backup Database... from the drop down menu. From the SQL Server Backup dialog you will need to specify the backup destination. For example, click the button and enter the name of the backup file.



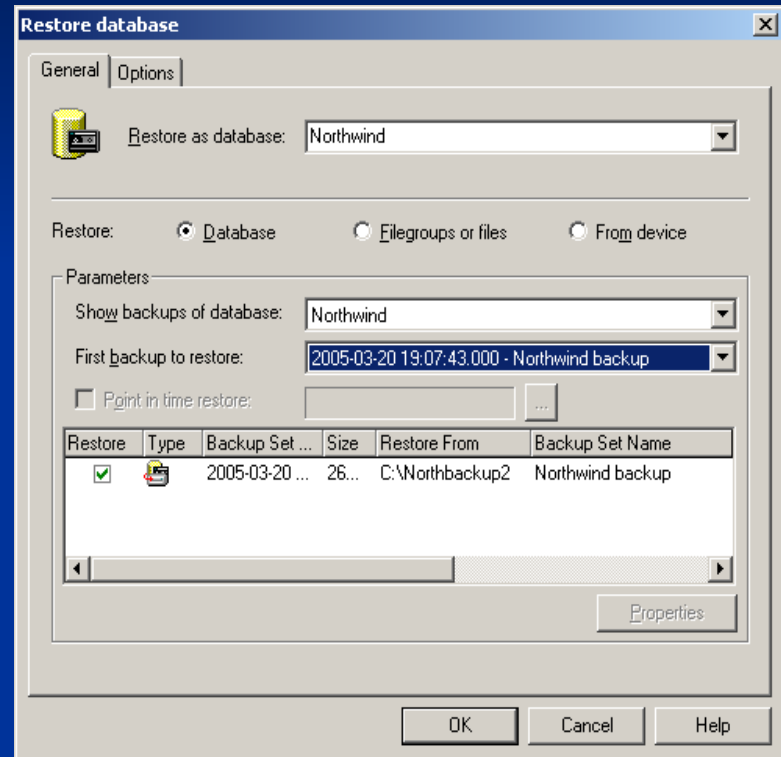
SQL Server Restore

And there are a couple of ways to restore a database...

- RESTORE DATABASE SQL statement.
- Using Enterprise Manager.

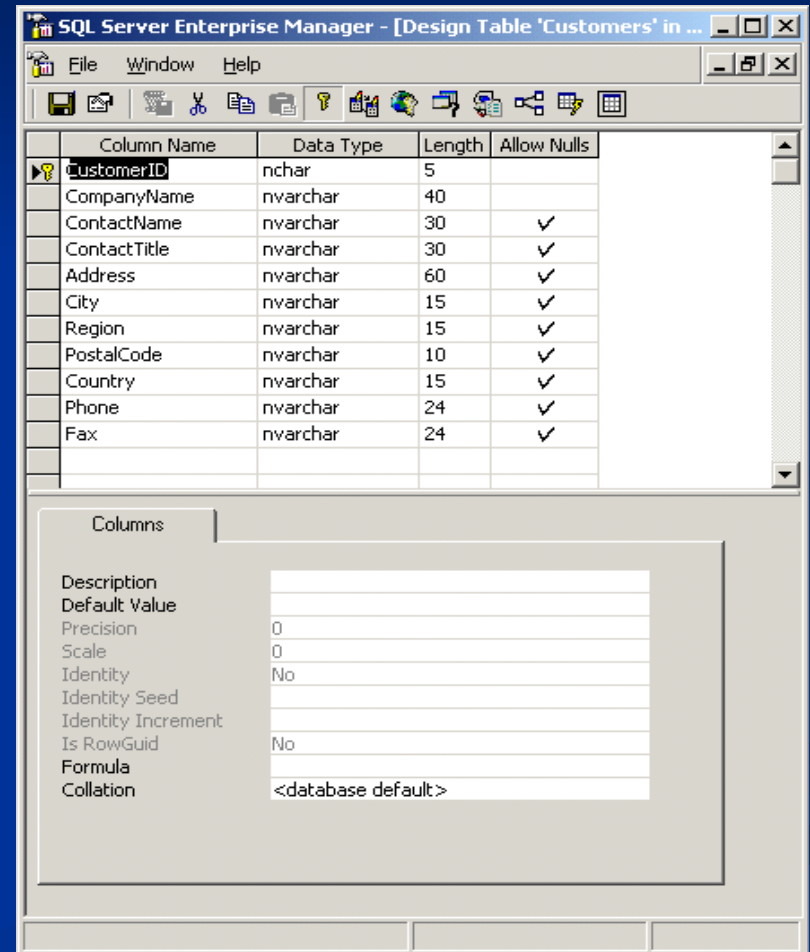
SQL Server Restore

In Enterprise Manager drill down to the desired server -> double click on the Databases folder -> right click on the database -> select All Tasks from the drop down menu -> select Restore Database... from the drop down menu. From the SQL Server Restore dialog you will select which backup is needed from the backup catalog.



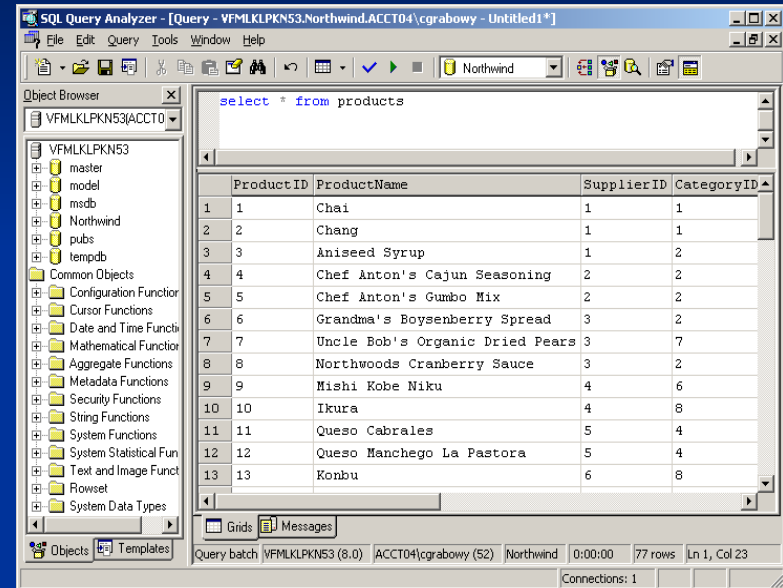
Modifying the structure of tables

In Enterprise Manager, drill down all the way to the table, right click and select Design Table from the drop down menu.



Where's SQL*Plus?

- Query Analyzer is the GUI equivalent of SQL*Plus. It can be found at Start -> Programs -> Microsoft SQL Server -> Query Analyzer.
- Query Analyzer can be used to run simple queries, create/edit stored procedures, and more.
- Query Analyzer has templates for some common SQL statements.



Where's SQL*Plus?

- OSQL is the command line equivalent of SQL*Plus.
- OSQL is the right tool if you are a command line freak.
- OSQL is the right tool if you want to code some scripts to interact with SQL Server.
- OSQL help can be found in Books Online or by typing “osql help” on the Windows command line.

Online Sources

- Books Online (BOL) – From Windows, Start -> Programs -> Microsoft SQL Server -> Books Online
- Microsoft Support for SQL Server -
<http://support.microsoft.com/ph/2852>
- MS SQL Server Newsgroup -
<http://www.microsoft.com/sql/community/default.mspx>
- Google Groups – <http://groups.google.com/>

Books

- SQL Server 2000 for the Oracle DBA by Christopher Kempster
- Professional SQL Server 2000 Programming by Robert Vieira
- Beginning SQL Server 2000 Programming by Robin Dewson

More?

- Show of hands. How many people would be interested in learning more about SQL Server??
- Other databases??
- Other subjects??

Questions?

Thank You

- Thanks for attending!!
- chris.grabowy@lmco.com